

## LEGEND

- Existing street trees to be protected & retained
- Proposed large canopy tree planting (refer to proposed indicative plant schedule)
- Proposed street tree planting (refer to Homebush West Public Domain Manual)
- Existing tree to be removed
- Proposed Palm tree planting (refer to proposed indicative plant schedule)
- Proposed small tree planting (refer to proposed indicative plant schedule)
- Proposed shrub planting (refer to proposed plant schedule)
- Proposed groundcover planting (refer to proposed indicative plant schedule)
- Proposed accent planting (refer to proposed indicative plant schedule)
- Proposed turf area (refer to proposed indicative plant schedule)
- Proposed feature banding
- Proposed conc, paving
- Proposed timber deck
- Proposed feature paving
- Proposed large format paving
- Proposed synthetic softfall over play area
- Proposed timber gazebo structure
- Proposed steel pergola
- Proposed on-structure planter
- Proposed feature gabion wall
- Proposed feature sandstone boulders
- Proposed cast-in-situ conc, bench
- Proposed twig seat
- Proposed water feature pot
- Proposed timber seat
- Proposed pebble seat
- Proposed feature GRC pot
- Proposed feature GRC seating pot
- Proposed feature GEM seat
- Proposed BBQ
- Proposed metal edging
- Site boundary
- Proposed shade structure over play area
- Proposed promenade pole light to lighting consultant detail

LANDSCAPE PLAN: ground floor

scale: 1:250



6-8 Baywater Drive, WENTWORTH POINT NSW

0 1 2 5 10 25

scale @1:250A1  
@1:500A3

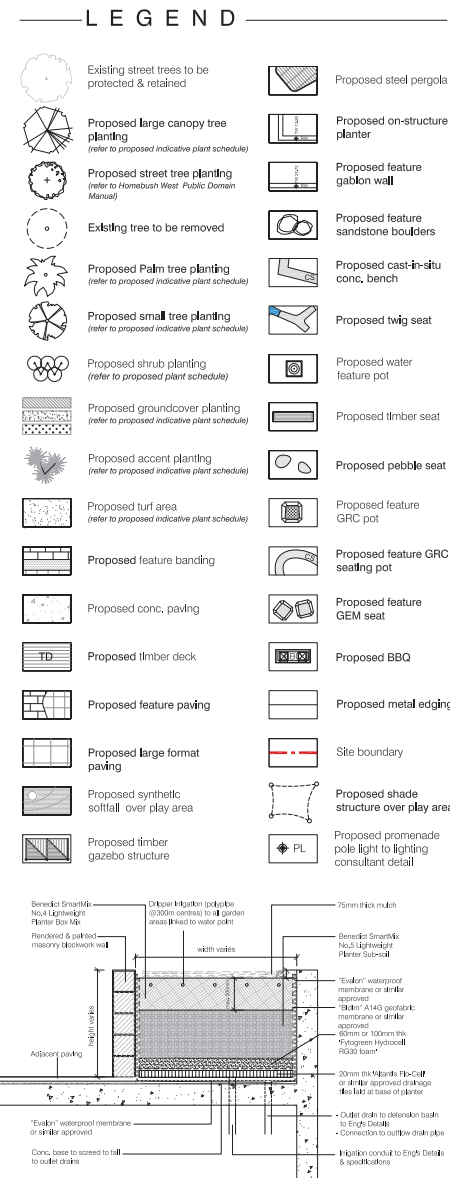
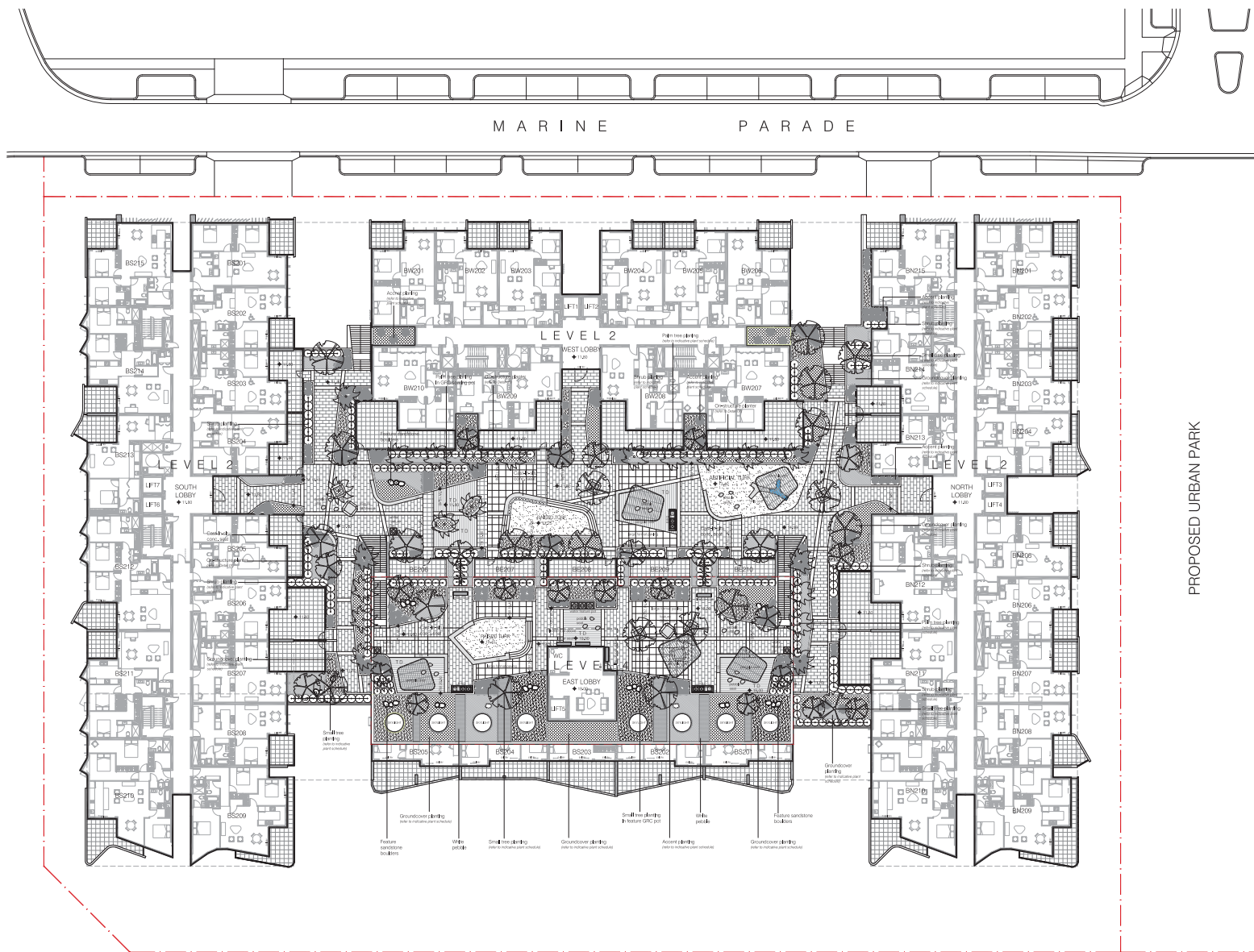


dwg title  
BLOCK B  
landscape plan:  
ground fr + level 01

scale: 1:250 @a1  
dwg no.: DA-L102  
Client:  
HOMEBUSH BAY BUILDING PTY LTD

revision	date
P1 client approval	02/06/16
A da submission	15/06/16
B da amendments	13/12/16
C da amendments	10/02/17
D da amendments	20/03/17

Do not scale off this drawing. Use figured dimensions only. Resolve discrepancies with The Landscape Architect before proceeding. Copyright of this drawing and designs executed remains vested in CANVAS landscape architects. Copyright remains with the Landscape Architects. Reproduction of this document is not permitted without the approval of the Landscape Architect. Contractors to verify site conditions and dimensions



LANDSCAPE PLAN: level 02 & level 04 scale: 1:250



6-8 Baywater Drive, WENTWORTH POINT NSW

0 1 2 5 10 25

scale @ 1:250A1  
@ 1:500A3

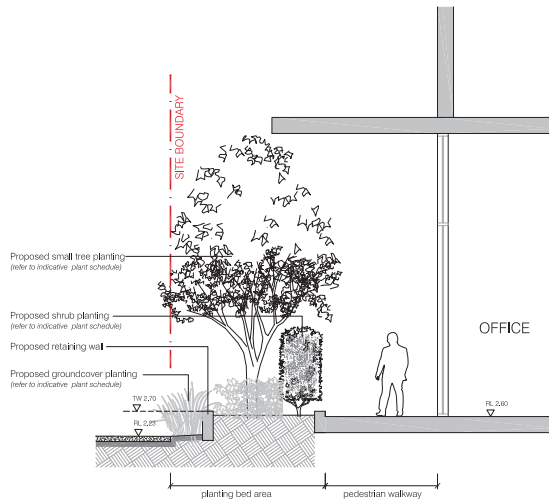


dwg title  
BLOCK B  
landscape plan:  
level 02 & 04 + typical  
detail

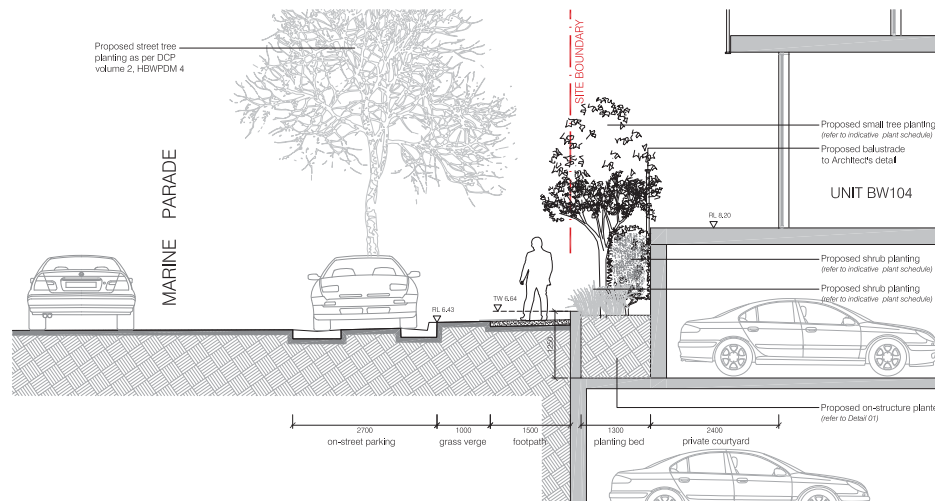
scale: 1:250 & 25 @ A1  
dwg no.: DA-L103  
Client:  
HOMEBUSH BAY BUILDING PTY LTD

revision	date
P1 client approval	02/06/16
A da submission	15/06/16
B da amendments	13/12/16
C da amendments	10/02/17
D da amendments	20/03/17

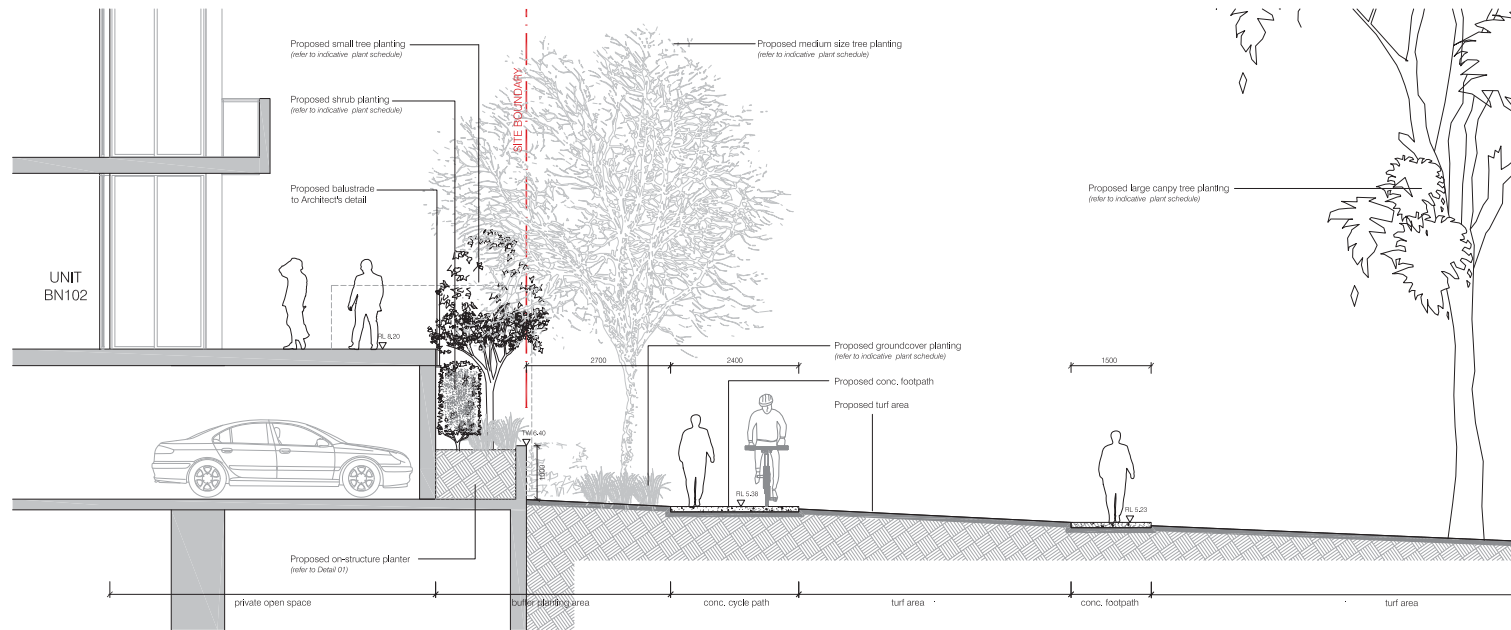
Do not scale off this drawing. Use figured dimensions only. Resolve discrepancies with The Landscape Architect before proceeding. Copyright of this drawing and designs executed remains vested in CANVAS landscape architects. Copyright remains with the Landscape Architects. Reproduction of this document is not permitted without the approval of the Landscape Architect. Contractors to verify site conditions and dimensions



SECTION A: south boundary scale: 1:50



SECTION B: west boundary scale: 1:50



SECTION C: north boundary scale: 1:50

## IRRIGATION NOTES

Provide a fully automatic irrigation system with an above ground dripper system to all on-structure planters on communal open space and Connect to the site rawwater tanks, with a backup connection to the mains water supply, in accordance with current Sydney Water requirements

The contractor shall be responsible for securing all necessary inspections and approvals by Authorities.

All standards of workmanship and materials used shall conform to the Australian Standards for that work, including all Sydney Water requirements.

Co-ordination of the irrigation system shall be included with other services throughout the site.

Provide heads which maintain a dripper flow of 2 litres per hour, during watering operation and which are vandal - resistant.

Provide a 8-12 Station automatic controller in a waterproof, lockable, metal box to the location to be advised.

Supply an automatic watering system using "TOPO IRRIGATION SYSTEM" or similar approved, with micro-jet sprinkler heads and low density, rubber modified polypropylene reticulation, to include filters, bends junctions, ends and other ancillary equipment. The landscape contractor shall nominate his source of supply for the watering system and obtain approval from the superintendent before placing orders for equipment or supply.



6-8 Baywater Drive, WENTWORTH POINT NSW

Do not scale off this drawing. Use figured dimensions only. Resolve discrepancies with The Landscape Architect before proceeding. Copyright of this drawing and designs executed remains vested in CANVAS landscape architects. Copyright remains with the Landscape Architects. Reproduction of this document is not permitted without the approval of the Landscape Architect. Contractors to verify site conditions and dimensions

dwg title	scale: 1:50 @a1	revision	date
BLOCK B	dwg no.: DA-L105	A da submission	13/12/16
landscape sections & irrigation notes	Client: HOMEBUSH BAY BUILDING PTY LTD	B da amendments	10/02/17
		C da amendments	20/03/17